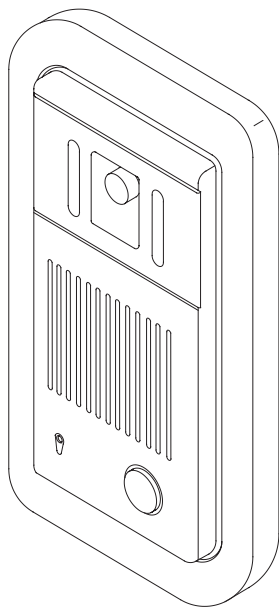


PROVIDEO

speco technologies™

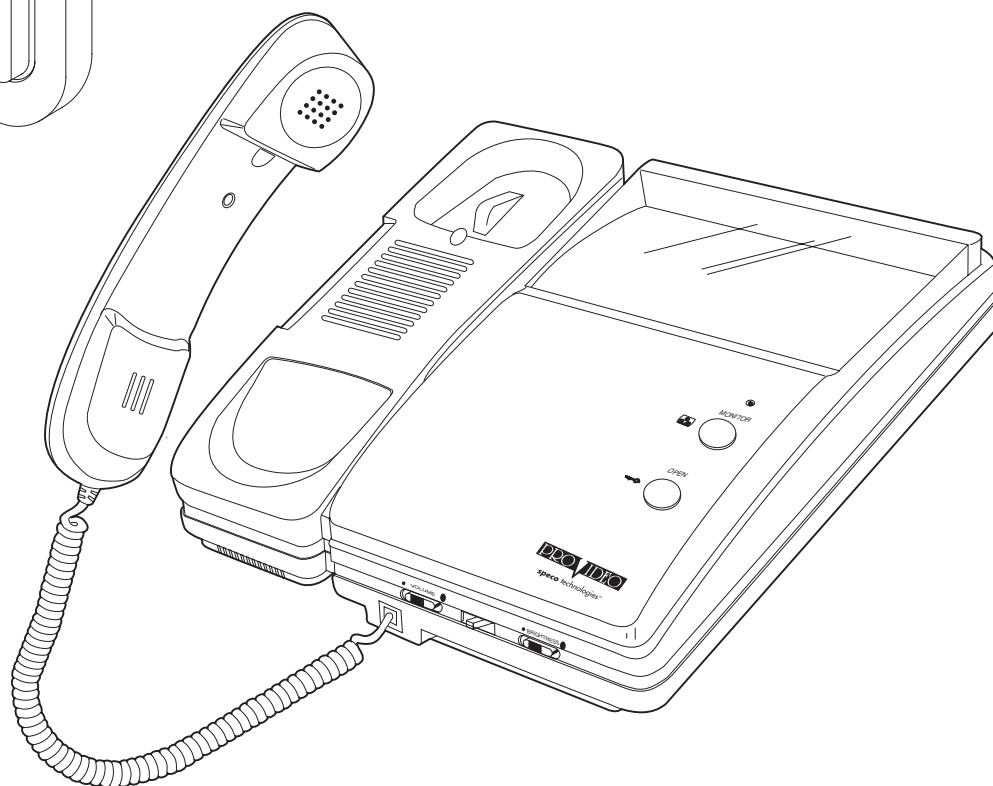
VIDEO SECURITY INTERCOM SYSTEM

Complete with 1 Monitor and 1 Camera
Expandable up to 2 Monitors and 2 Cameras



INDOOR MONITOR
OUTDOOR CAMERA
(FLUSH MOUNT)

VDP-5000



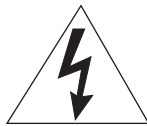
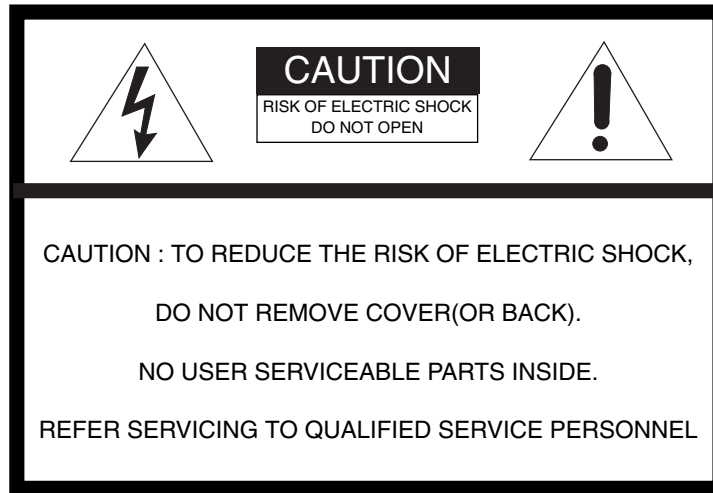
speco technologies™

200 New Highway • Amityville, N.Y. 11701

Toll Free : 1-800-645-5516 In Metro NY : 631-957-8700

Fax : 631-957-9142 or 631-957-3880 Web: www.specotech.com

WARNING : TO PREVENT FIRE OR ELECTRIC SHOCK
DO NOT EXPOSE THIS APPLIANCE TO RAIN OR MOISTURE



This symbol is intended to alert the user to the presence of uninsulated “dangerous voltage” within the product’s enclosure that may be of sufficient magnitude to constitute a risk of electric shock to persons.



This symbol is intended to alert the user to the presence of important operating and maintenance(servicing) instructions in the literature accompanying the appliance.

IMPORTANT SAFETY INSTRUCTIONS

NOTE : Although the Doorbell Module is weather-resistant it is not waterproof. Choose a sheltered location(e. g., porch), so the unit is not directly exposed to elements.

- ★Read Instructions – All of the safety and operating instructions should be read before this product is operated or installed. If you are unsure of any wiring procedures more complicated than the plugging in of a product, contacting an electrician is suggested.
- ★Retain Instructions – The safety and operating instructions should be retained for future reference.
- ★Product Warranty – Review the product warranty and service statements.
- ★Read Warnings – All warnings on the product and in the operating instructions should be adhered to.
- ★Follow Instructions – All operating and use instructions should be followed.

- ★Cleaning – Unplug this product from the wall outlet before cleaning. Use a damp (not wet) cloth for cleaning. Do not clean the cabinet with liquid cleaners, aerosol cleaners, gasoline or other types of flammable fluids.
- ★Water and Moisture – Do not use this product near water. For example : near a bath tub, wash bowl, kitchen sink, or laundry tub; in a wet basement; or near a swimming pool; etc. Do not use any component of this system in an exposed outdoor area, unless the instructions clearly state that it is safe to. Do not operate this system in the presence of explosive or flammable fumes.
- ★Overloading – Do not overload wall outlet, extension cords, or integral convenience receptacles as this can result in a risk of fire or electric shock.
- ★When Not in Use – If no one is at home for extended periods of time (like vacations, etc.) this product should be unplugged or turned off for the purpose of energy conservation and safety.
- ★Power Source – The monitor should be operated only from the type of DC adapter packaged in this box. When connecting additional monitor, also use additional DC power adapter for that monitor
- ★Disconnecting – Never carry the product by its cord, or yank it to disconnect from an electrical outlet; instead, grasp the plug and pull to disconnect. Keep the cord away from heat, oil and sharp edges.
- ★Object and Liquid Entry – Never push objects of any kind into openings on this product as they may touch dangerous voltage points or short out parts. This could result in a fire or electrical shock. Never spill liquid of any kind on the product.
- ★Ventilation – This product should be situated so that its location or position does not interfere with its proper ventilation. For example, the product should not be situated on a bed, sofa, rug, or similar surfaces that block ventilation openings; or placed in a built-in installation, that prevents an air flow around the product.
- ★Servicing – Do not attempt to service this product yourself, as opening or removing covers may expose you to dangerous voltage or other hazards. Refer all servicing to qualified personnel.
- ★Damage Requiring Service – Unplug this product from the wall outlet and refer servicing only to qualified service personnel under the following conditions :
 - A. When the power supply cord or plug is damaged.
 - B. If liquid has been spilled, or objects have fallen into product.
 - C. If the product has been exposed to rain or water or other liquids.
 - D. If the product does not operate normally by following the operating instructions. Adjust only those controls that are covered by the operating instructions. Improper adjustment of other controls may result in damage and will often require extensive work by a qualified technician to restore the product to its normal operation, not covered under manufacturer's warranty. Do not attempt to service this product beyond that described in the operating instruction manual.
 - E. If the product has been dropped or damaged in any way.
 - F. When the product exhibits a distinct change in performance, this indicates a need for service.

- ★ Replacement Parts – Use only replacement parts that are specified by the manufacturer or that have the same characteristics as the original part. Unauthorized substitutions may result in fire, electrical shock, or other hazards and void warranty.
- ★ Safety Check – Upon completion of any service or repairs to this product, ask the service technician to perform safety checks to determine that the product is in proper operating condition.
- ★ Wall Mounting – The product should be mounted to a wall, only as recommended by the manufacturer.
- ★ Heat – The product should be situated away from heat sources such as radiators, heat registers, stoves or other products(including amplifiers) that produce heat. Position this product so its location does not interfere with its proper ventilation.

Always use discretion when installing video and audio surveillance equipment especially when there is perceived privacy, or an expectation of privacy. Inquire regarding federal, state and/or local regulations applicable to the lawful installation of video and/or audio recording or surveillance equipment. Party consent may be required.

note: This equipment has been tested and found to comply with the limits for a Class B digital device, pursuant to part 15 of the FCC Rules. These limits are designed to provide reasonable protection against harmful interference in a residential installation.

This equipment generates, uses and can radiate radio frequency energy and, if not installed and used in accordance with the instructions, may cause harmful interference to radio communications. However, there is no guarantee that interference will not occur in a particular installation. If this equipment does cause harmful interference to radio or television reception, which can be determined by turning the equipment off and on, the user is encouraged to try correct the interference by one or more of the following measures:

- Reorient or relocate the receiving antenna.
- Increase the separation between equipment and receiver.
- Connect the equipment into an outlet on a circuit different from that to which the receiver is connected.
- Consult the dealer or an experienced radio TV technician for help.

INTRODUCTION

Congratulations on the purchase of your new video intercom system!

Please read these instructions carefully before installing your system and follow all of the directions to ensure proper installation.

This instruction manual explains in simple steps how to install, use, and care for your new video doorphone system in homes, offices or businesses.

Serial Number(From Rear Panel)

Date of Purchase

Place of Purchase

<u>TABLE OF CONTENTS</u>	Page
PARTS CHECKLIST	5
FEATURES	6-7
INSTALLATION	8-9
WIRING DIAGRAM	10
OPERATION	11
TROUBLE SHOOTING GUIDE	12
SPECIFICATIONS	12

PARTS CHECKLIST

- Monitor1
- Handset.....1
- Mounting Bracket1
- Mounting Screws for Bracket2
- Monitor Mounting Screw (to Bracket).....1
- DC Adapter1

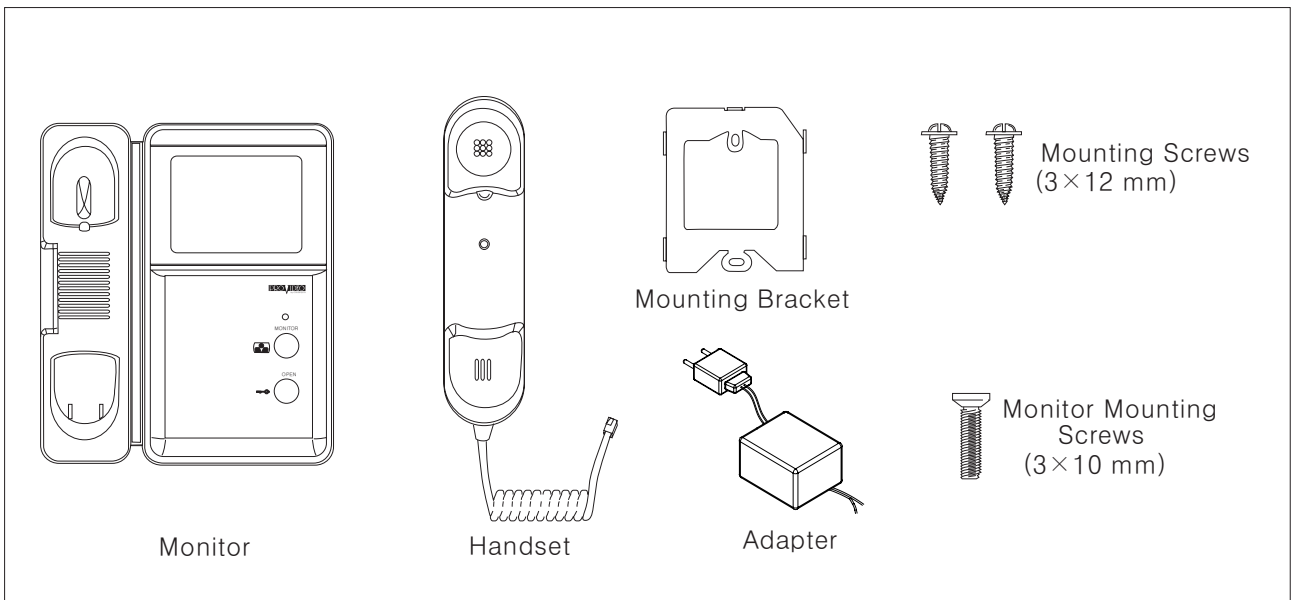
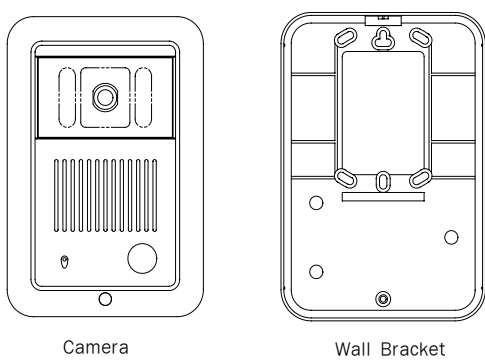


Figure 1

■ Camera(VDP-C5F)



- Camera 1EA
- Wall Bracket 1EA
- Mounting Screw
 - T4 × 18mm(ZnW) 4EA
 - M3 × 36mm(Ni) 1EA
 - M3 × 34mm(Bk) 1EA
- Camera Fixing Screw(M4 × 15) 1EA
- Screw cover 1EA

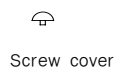
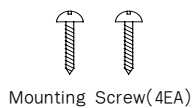


Figure 2

FEATURES

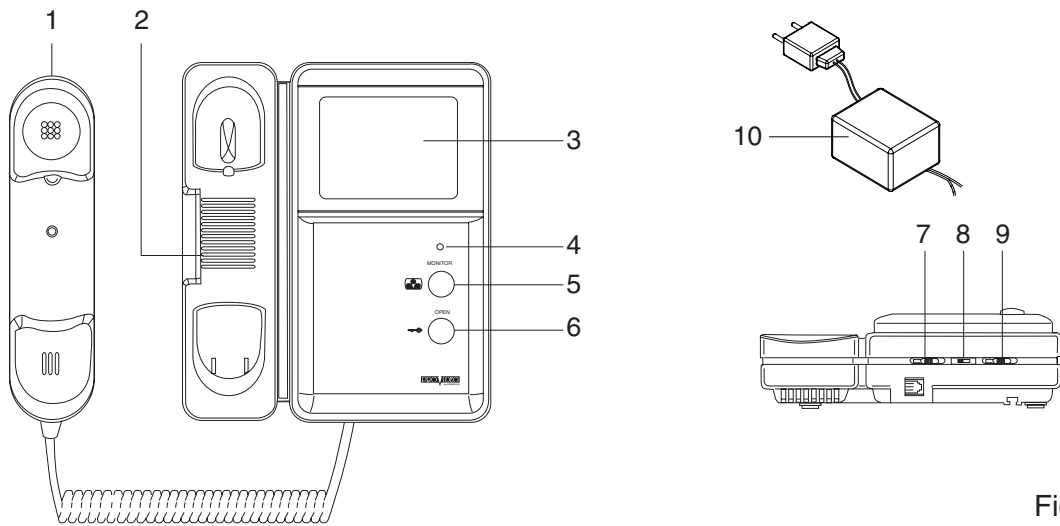


Figure 3

- | | |
|--|---|
| <ul style="list-style-type: none"> 1. Handset
Lift to communicate with caller. 2. Speaker
Chime tone sounds when callers push the call button on the camera. 3. Monitor screen
4" flat type B/W C.R.T. 4. Power Lamp
Illuminates when the system is on. 5. Monitor Button
Press this button to activate either camera 1 or 2 and view the picture on the monitor screen. It works as a manual switcher. 6. Door Release Button | <ul style="list-style-type: none"> 7. Call Sound Volume
Adjusts the call chime volume. 8. Power Switch
Activates and deactivates the Video doorphone. 9. Brightness Control
Adjusts the picture brightness. 10. DC Power Supply 11. Terminal Strip
See figure 4. |
|--|---|

* Please note that the door release only operates the camera being viewed.

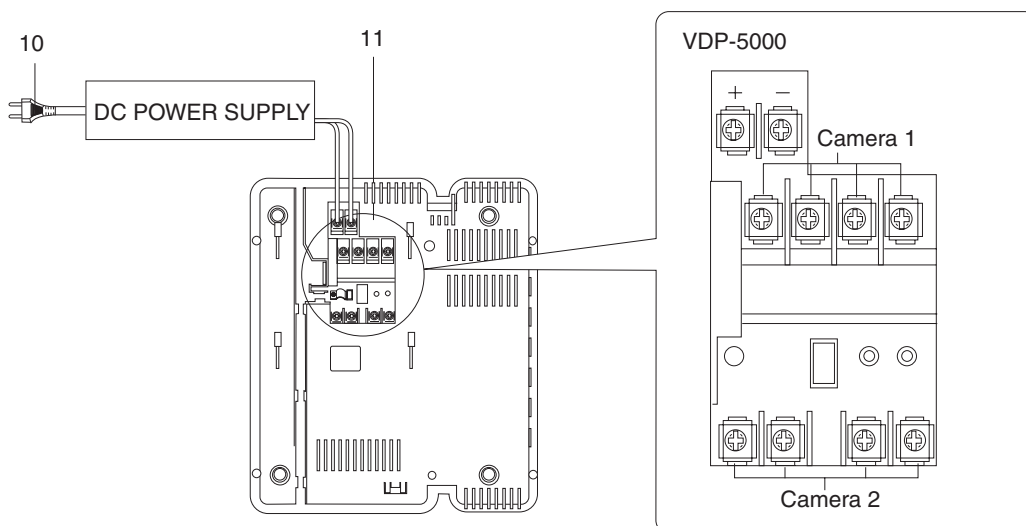


Figure4

The monitor was designed as a non-polarized unit, and you can connect the adapter cable to either the (+) or (-) terminal of the monitor.

FEATURES



Figure 5

- ① FRONT PANEL
- ② INFRARED LED : Allows for the viewing of caller at any illumination
- ③ CCD CAMERA LENS
- ④ LENS WINDOW
- ⑤ SPEAKER : Provide high quality audio to a caller.
- ⑥ CALL BUTTON
- ⑦ MICROPHONE
- ⑧ SCREW COVER
- ⑨ LEVER FOR ANGLE ADJUSTMENT
- ⑩ TERMINAL
- ⑪ DOOR RELEASE CABLE

INSTALLATION

MONITOR

1. Connect the handset and cord to the Monitor Jack.
2. Determine the position of the monitor display. The standard position is at eye level.
3. Place the Mounting Bracket at the desired location, and attach it to the wall with two mounting screws(provided).
4. Connect the cable to the back of Monitor at Terminal.(Cable not Supplied)
5. Insert the tabs of the bracket into the holes on the Monitor and pull downward.
6. When connecting an additional monitor, also use additional DC power adapter for that monitor

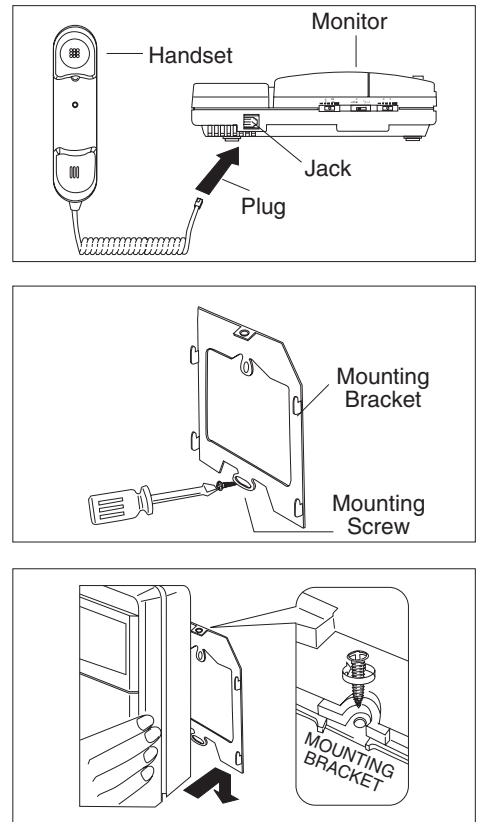


Figure 6

Standard Position of the Camera Lens

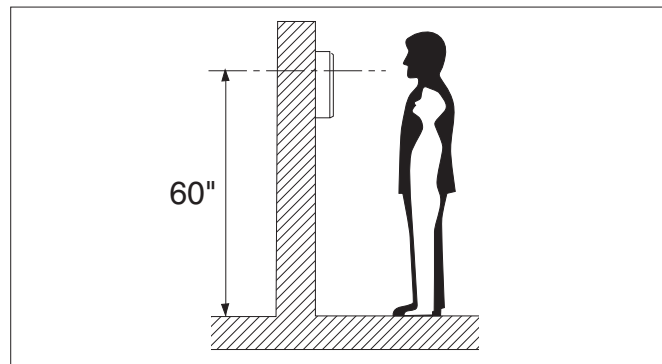


Figure 7

INSTALLATION

CAMERA

1. Install the recessed camera box into the wall, secure properly.
2. Remove the front panel from main unit.
3. Place the main unit and the front panel into the box using the two tamperproof screws. Tighten with wrench supplied.

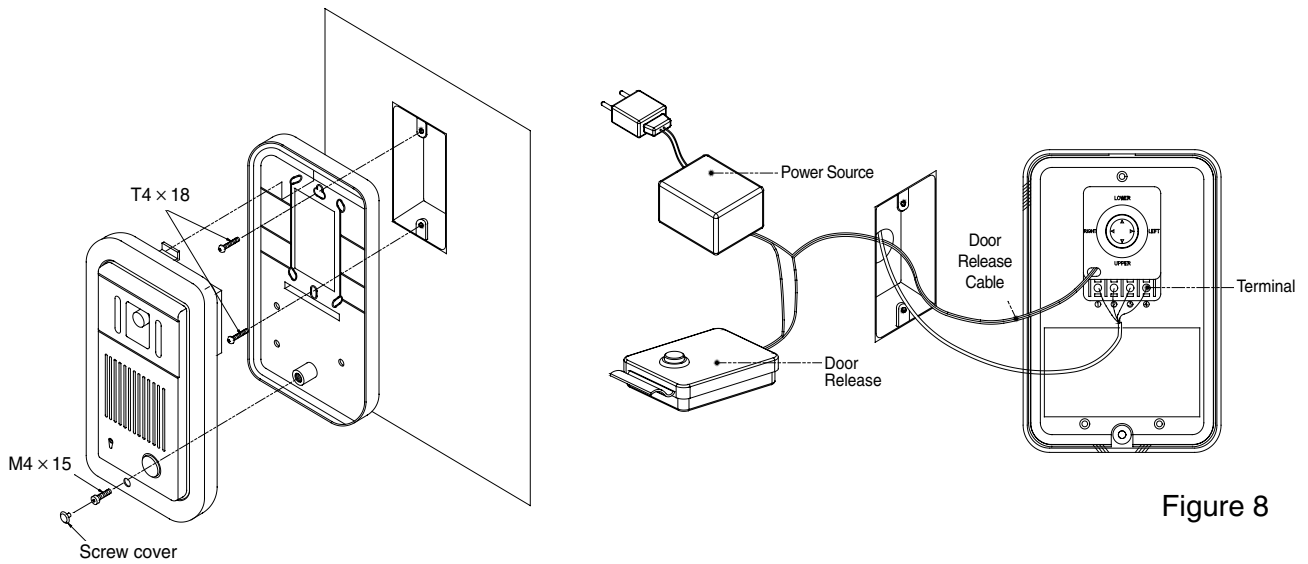


Figure 8

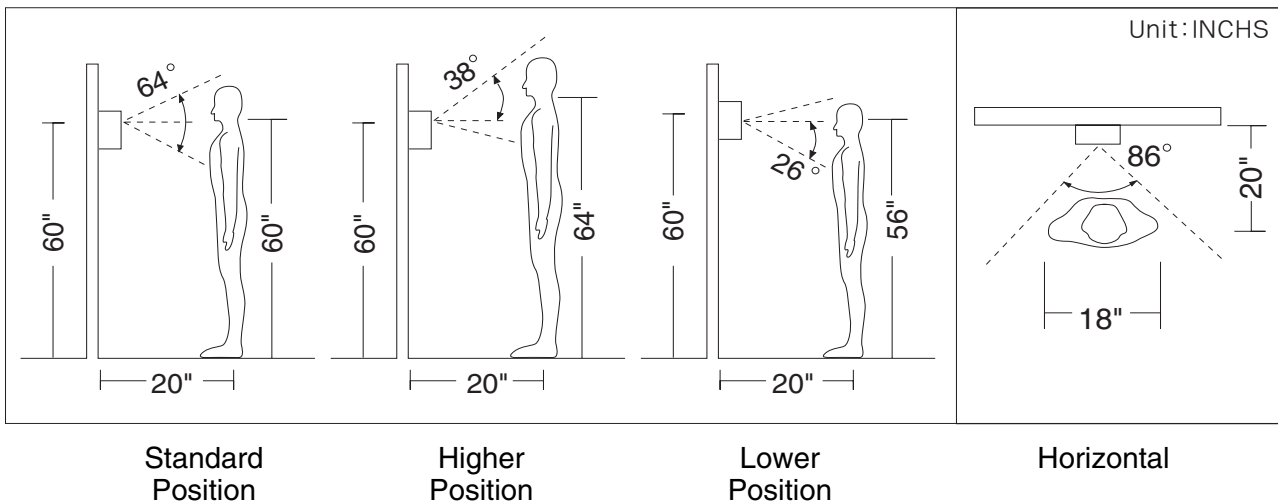


Figure 9

WIRING DIAGRAM

VDP-C5F CAMERA FOR VDP-5000

■ 1 Monitor & 2 Cameras

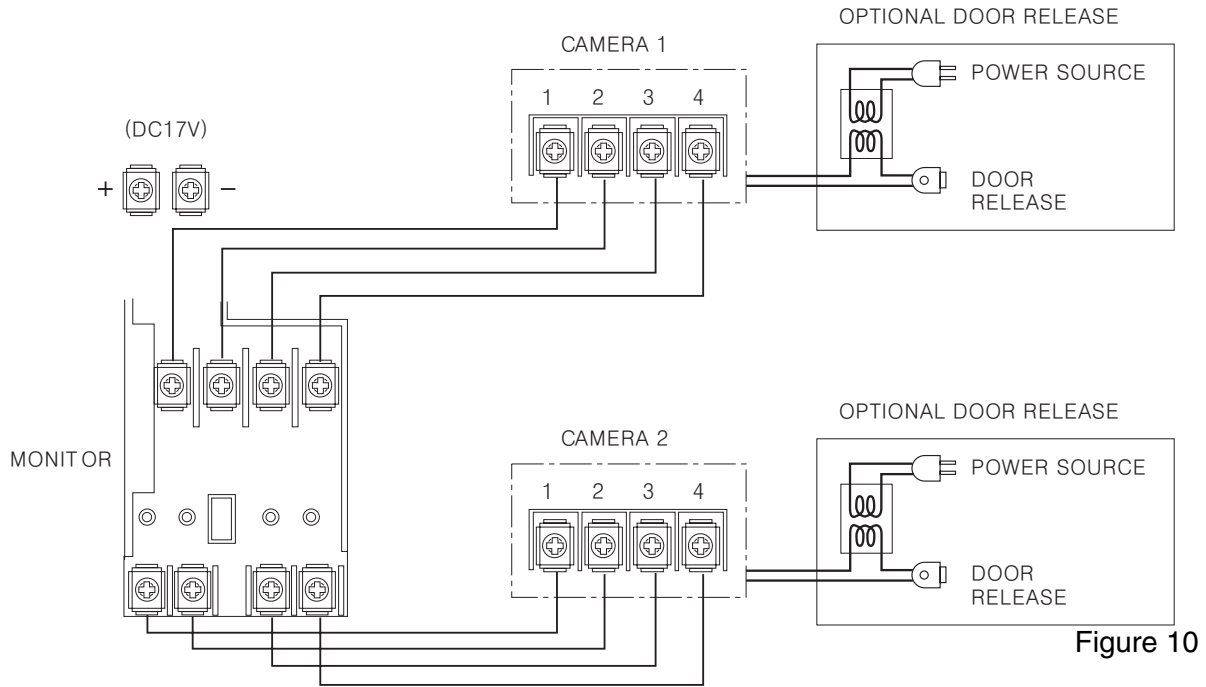


Figure 10

Use of color coded cable is recommended for proper wiring connection.

■ 2 Monitors & 2 Cameras

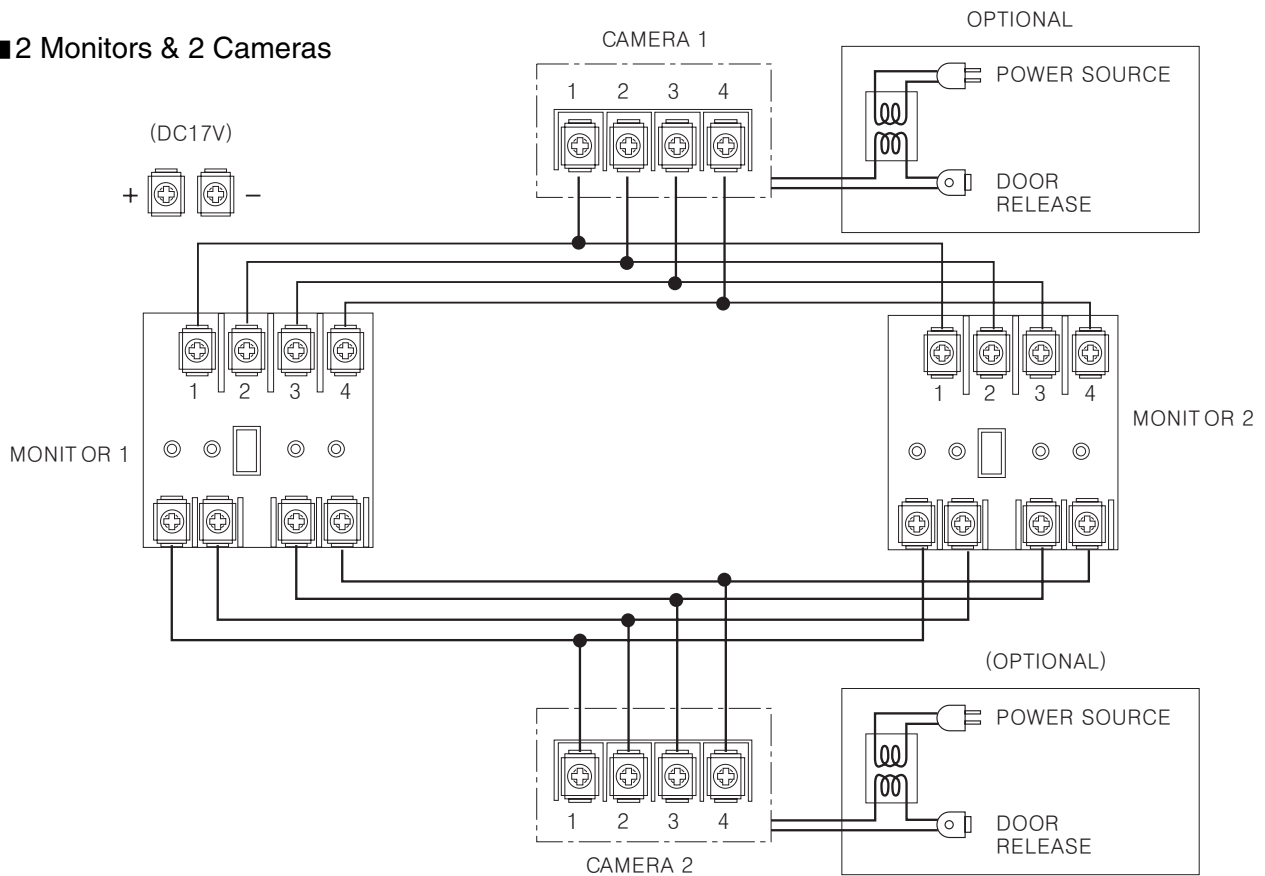


Figure 11

OPERATION

Turn the power switch ON. Use the side buttons for volume and brightness controls.

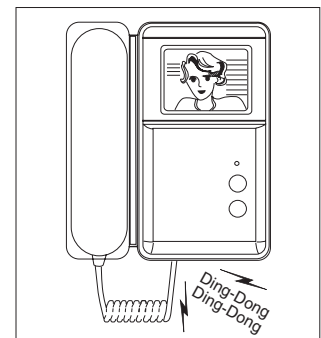
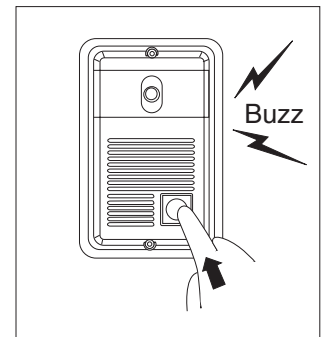
Call Button:

1. A visitor presses the Call button on the Camera.
A tone is heard at the monitor.

2. The caller then talks handsfree after you answer the call.

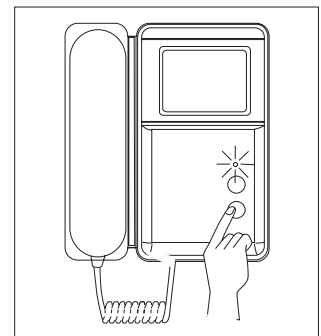
Monitor Station:

1. A chime sounds and the caller appears on the Monitor Screen automatically.
2. Pick up the handset to talk to the caller.
3. Hanging up the Handset returns the Monitor to stand by mode.



Operating the Electric Door Release:

If desired, depress and hold the Door Release Button which will activate the electric door strike (optional accessory required).
(See Wiring Diagram)



Monitoring:

Press the Monitor Button to see the Camera for 20 seconds.

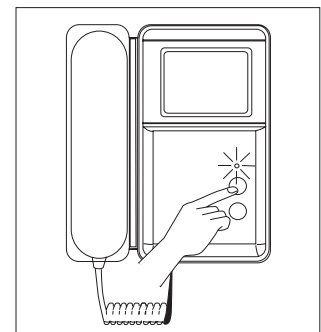


Figure 12

TROUBLE SHOOTING GUIDE

Carefully read and perform the following procedures before returning your Video Doorphone for repair.

- If the Power Lamp fails to light, check that the Power On/Off Switch is in the On position.
Also, make sure that the plug of the power supply is properly inserted into the power outlet.
- If the Power Lamp is dim, there is a possible short in the wires between the Monitor and Camera.
- If you see snow on the Monitor CRT, the wires between the Monitor and Camera are disconnected or poorly connected.
- If there is audio, but no picture on the Monitor CRT, the brightness control may be incorrectly adjusted.

SPECIFICATIONS

Voltage Requirements :	DC 17V, 60Hz .
Power Consumption :	Maximum 24VA; stand by 2VA.
Monitor Screen :	Black & White Flat 4" flat type CRT.
Call Tone :	Electronic Chime.
Alarm Tone :	Warning tone.
Audio Communication System :	Duplex handset.
Maximum Wiring Distance :	165ft.(22AWG wire) - 4 Conductors.
Monitor Extensions :	Depends on distance from camera and number of extensions.
Optimal Working Temperature :	+14° F to + 104° F.
Weight :	3.3 lbs.
Dimensions :	9"(H) × 7 1/2"(W) × 2 3/4"(D).
Adapter Input	AC 120V ; 60Hz ; 0.35A
Adapter Output	DC 17.0V \approx 1.3A