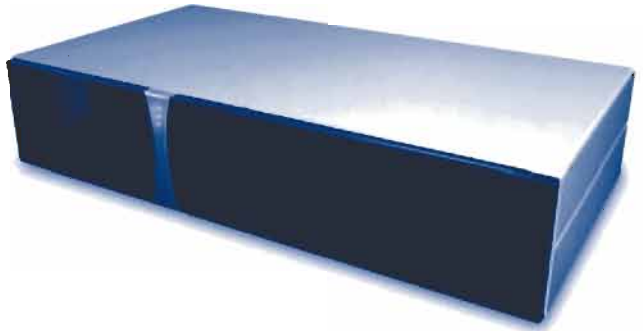




digitaldeck



**DigitalDeck**  
**Entertainment Network**  
Installation Guide

---

DigitalDeck

**DigitalDeck  
Entertainment Network**

Installation Guide

## **Copyright and Trademark**

© Copyright 2004 by DigitalDeck, Inc. and may not be reproduced in whole or in part, by any means, without written permission.

DigitalDeck, eDeck and DigitalDeck Entertainment Network are trademarks of DigitalDeck, Inc. Trademark names marked ™ or ® and other company and product names may be trademarks or registered trademarks of their respective vendors or organizations.

## **Title, Part and Release Numbers**

Title: DigitalDeck Entertainment Network User Guide

Part Number: DD000400-01010001

Release Number: DDen v1.0

Information in this guide is subject to change without notice and does not constitute a commitment on the part of DigitalDeck, Inc. It is supplied on an "as is" basis without any warranty of any kind, either explicit or implied. Information may be changed or updated in this guide at any time.

This material was written and produced by Lasselle-Ramsay, Mountain View, CA ([www.lr.com](http://www.lr.com)).

## **Company Headquarters**

DigitalDeck, Inc.  
3 Twin Dolphin Dr., Suite 160  
Redwood City, CA 94065  
650-413-6090

---

# Table of Contents

<b>Overview</b>	1
<b>Install the eDeck Units</b>	2
<b>Install the MX 1000</b>	4
<b>Set Up eDeck Units and Devices in Each Room</b>	5
Register the DigitalDeck System	5
Set Up Output Devices	6
Set Up Input Devices	8
Set Up Channel Lineup	11
<b>Set Up Digital Media Files on PC</b>	13
<b>Frequently Asked Questions</b>	16
<b>Customer Support</b>	18

## Table of Contents

---

# Installation Guide

---

## Overview

This document provides instructions for installing the DigitalDeck Entertainment Network (DDen) components and home entertainment devices and how to perform the DDen system setup. This guide will also cover procedures for moving and managing the customer's pre-existing media files from their PC to the MX 1000.

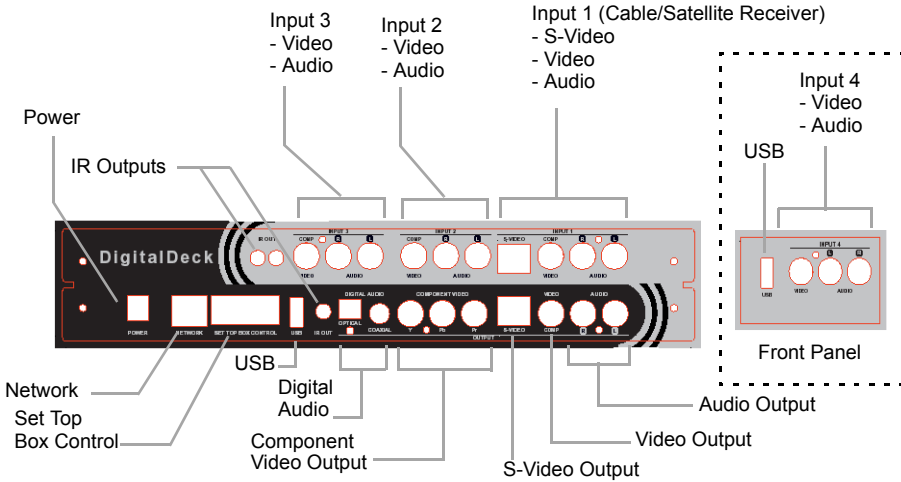
**NOTE** The term *device* describes any home electronic devices installed on the DDen such as a cable/satellite receiver, DVD player, amplifier/receiver, and VCR.

---

Preparation	Hardware Requirements
<p>This guide assumes that the following installation activities have already occurred:</p> <ul style="list-style-type: none"><li>■ Home entertainment devices such as stereo receiver, DVD player, and VCR have already been connected and tested.</li><li>■ Cable or satellite has been connected and wired to each room.</li><li>■ CAT 5 Ethernet cable has been wired to all rooms that will be on the DDen.</li><li>■ An Ethernet router has been set up and tested and the MX 1000 and eDecks have been connected to the Ethernet network.</li><li>■ You have registered the DDen components on the DigitalDeck website and you have the User ID and Authentication code.</li></ul>	<p>The following hardware is required for each room that will be connected to the DDen:</p> <ul style="list-style-type: none"><li>■ An eDeck.</li><li>■ A DigitalDeck remote control for each eDeck.</li><li>■ RCA cables to connect input and output devices to each eDeck. (Only if devices will be connected to the eDeck in a room.)</li><li>■ CAT 5 Ethernet cable to connect the eDeck to the DDen.</li><li>■ IR emitter plug-in device for input and output devices. (Only if devices will be connected to the eDeck in a room.)<ul style="list-style-type: none"><li>– Each IR emitter splits off into two emitters.</li><li>– Each eDeck has three IR plugs and can accommodate up to six devices.</li></ul></li></ul>

---

## Install the eDeck Units



- 1 Connect a video cable from the eDeck Video Output to the audio-video (RCA) input on the television.
- 2 Connect the audio cable from the eDeck Audio Output to the audio on the television or the amplifier/receiver.
- 3 Connect the cable/satellite receiver cable to Input 1 on the eDeck.  
**NOTE** Input 1 can be used for any device input if you will not be connecting a cable/satellite receiver.
- 4 Connect remaining audio-video inputs to available inputs on the eDeck. (Input 2, 3, or 4)  
**NOTE** Audio or video inputs are not required. It is possible to use the eDeck as a receiver from the MX 1000 and output to the television.
- 5 Connect the Ethernet cable to the network connection on the eDeck.

- 6 Connect an IR emitter to the IR input on the eDeck and place the IR emitters on each of the devices connected to the eDeck.

Here are tips for installing the IR emitters:

- a Place the IR emitter next to the IR receiver on the device.

**CAUTION** *DO NOT place the IR emitter directly over the IR receiver on a device.*

- b Use a flashlight to locate the IR receiver if it is located behind the front cover of the device.
  - c Replace the standard IR emitter with an IR blaster for rear projection televisions as it can be difficult placing the IR emitter.
- 7 Connect the power cord to the eDeck and connect to power outlet. A blue LED light will appear on the eDeck indicating the unit is powered on.

**NOTE** The LED lights on the eDeck will display different colors depending on the state of the eDeck.

- Blue - Indicates that the eDeck is powered. It is ALWAYS on, even if you turn the eDeck/television off. The blue LED also flashes when the eDeck senses IR input indicating to the customer that an IR command has been sent to the eDeck.
  - Green - Indicates that the eDeck sees the MX 1000 via the customer's Ethernet network. It should ALWAYS be on. If not, the eDeck is in pass-through mode.
  - Red - Indicates that the eDeck is recording media from one of its inputs.
- 8 Test the eDeck in loopback mode:
    - a Turn on television power.
    - b Set television to the appropriate input (select the audio/video input that is connected to the output on the eDeck). After 60 seconds you should have audio and video on the television.
- NOTE** This occurs in pass-through mode only. You can still view television even if the MX 1000 is not powered on.
- 9 Repeat **steps 1-8** for each room that will be connected to the DDen.

## Install the MX 1000



- 1 Connect the MX 1000 to Ethernet network using a standard CAT 5 Ethernet cable.
- 2 Connect the power cord to the MX 1000 and to the power outlet.
- 3 Press the Power button on the MX 1000. Wait 60 seconds to allow system to boot up.

**NOTE** The expansion connection is optional.

## Set Up eDeck Units and Devices in Each Room

The following installation instructions describe how to perform the system setup following the installation of all DigitalDeck components and entertainment devices.

**NOTE** The following setup instructions must be repeated for each room where you have installed an eDeck.

### Register the DigitalDeck System

- 1 Turn on the television and press the **Power** button on the remote control to turn on the eDeck. The Customer Authentication screen displays.

**NOTE** The Customer Authentication screen only displays during the initial system setup. If it does not display, return to the **Install the eDeck Units** and **Install the MX 1000** sections and check your installation.

**NOTE** If you have not registered the DDen system, go to the DigitalDeck website and register at this time.

- 2 Enter the User ID and Authentication code provided during the online registration.
- 3 Press the **Live/OK** button to display the main Setup screen.

**NOTE** If you enter the wrong User ID and/or Authentication Code, the fields will clear and revert to the default.



## Set Up Output Devices

The eDeck device name is highlighted in the Setup screen.

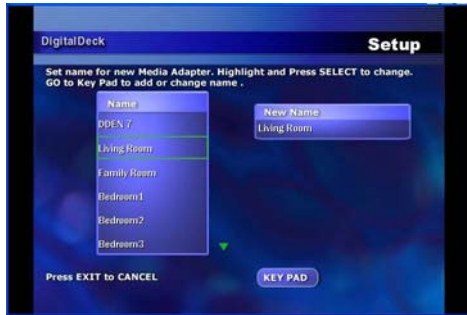
- 1 Press the **Select** button to select the eDeck name and display a list of rooms.



- 2 Press the ▼ arrow button to highlight the desired room name.

**NOTE** You can also select the Key Pad option on the screen to access the online keypad and enter a custom room name.

- 3 Press the **Select** button to select the room name and display a list of output device types.



- 4 Press the ▼ arrow to highlight the TV as the output device type.

- 5 Press the **Select** button to display a manufacturer list for the selected device.



- 6 Press the ▼ arrow button to highlight the manufacturer name.

**NOTE** You can use the alpha numeric buttons on the remote control to jump to the desired manufacturers name.

For example to find *Sony*:

- a Press the 7 button to see all names starting with the letter P.
  - b Continue to press the 7 button until you see all manufacturers starting with the letter S.
  - c Press the ▼ arrow button until you find *Sony*.
- 7 Press the **Select** button to select the manufacturer name and display the IR code list.
- 8 Press the ▼ arrow button to highlight the appropriate IR code from the list.
- 9 Press the **Select** button to display the IR code test screen.



The IR test screen describes the device IR test including the criteria for a correct and incorrect test for that device.

- 10 Press the **Select** button to run the IR code test.
- 11 Repeat **steps 8–10** to continue testing IR codes until it turns the device power off and then on.
- 12 Press the **Live/OK** button to accept the correct code and return to the main Setup screen.
- 13 Repeat **steps 1–12** for the amplifier/receiver output device if applicable.

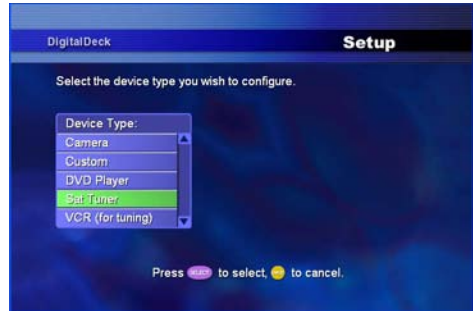


## Set Up Input Devices

- 1 Press the **▼** arrow button to highlight Input 1 in the Input Devices list.
- 2 Press the **Select** button to open a list of input device types.



- 3 Press the ▼ arrow button to highlight the appropriate input device type from the list.



- 4 Press the **Select** button to display a list of device manufacturer names.



- 5 Press the ▼ arrow button to highlight the device manufacturer name from the list.
- 6 Press the **Select** button to select the manufacturer name and display the IR code list.

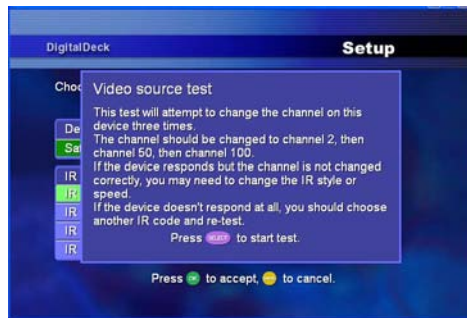


- Press the ▼ arrow button to highlight the appropriate IR code from the list.
- Press the **Select** button to display the IR code test screen.



The IR test screen describes the device IR test including criteria for a correct and incorrect test for that device.

- Press the **Select** button to run the IR code test.
- Repeat **steps 7–9** to continue testing IR codes until it turns the device power off and then on.
- Press the **Live/OK** button to accept the IR code and return to the main Setup screen.
- Repeat **steps 1–11** for each input device that is connected to the eDeck.

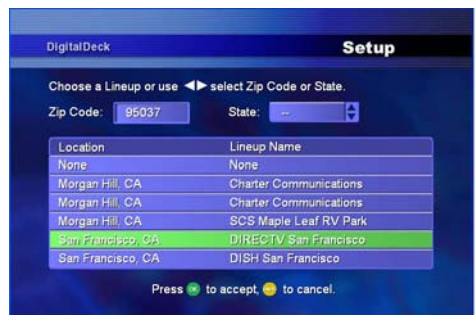


## Set Up Channel Lineup

- 1 Press the ▼ arrow button to highlight the cable or satellite receiver device in the Input Devices list.
- 2 Press the **Select** button to display the Channel Lineup option.
- 3 Press the ▼ arrow button to highlight Channel Lineup and press the **Select** button.
- 4 Press the **Select** button to open a screen that displays fields for entering the ZIP code and state.
- 5 Enter the ZIP code or select the state name from the list.

**NOTE** Entering the ZIP code will result in a more focused list with cities in the customer's area.

- 6 Press the **Select** button to generate a list of cities, and cable and satellite carriers.
- 7 Press the ▼ arrow button to highlight the correct city and cable or satellite carrier.
- 8 Press the **Select** button to accept the city and carrier and display an option screen for the next step of the channel selection procedure.



- 9 Do one of the following:
  - Press the **Select** button on the No option to exit out of the channel selection procedure and return to the main Setup screen.
  - Press the ▼ arrow button to highlight the Yes option and, press the **Select** button to continue with the channel selection procedure.

**NOTE** If the customer is unsure of how to proceed with channel selection, select the No option and the customer will see all available channels in the Electronic Program Guide (EPG).

**NOTE** To update the channels from your EPG at a later date, please return to this setup procedure and follow **steps 1–9**.



- 10 Press the ▲▼ arrow buttons to select the channels the customer *does not* want to see in the EPG.
- 11 Press the **Select** button to remove the channel from the EPG.
- 12 Repeat **steps 10 and 11** for each channel the customer *does not* want to display in the EPG.
- 13 Use the arrow buttons to navigate to the Done option and press the **Select** button to return to the Main Menu.



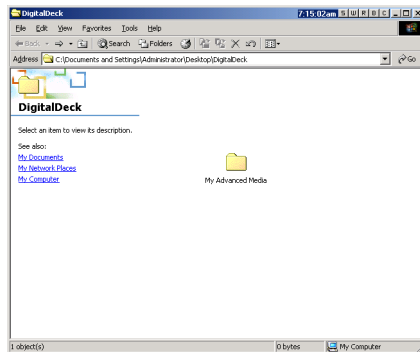
## Set Up Digital Media Files on PC

The following instructions are for setting up the customer's personal digital media files on the DDen. The setup is performed on the PC.

**NOTE** These instructions only apply to customers who have digital media files stored on their PC that they want to play on the DDen.

The MX 1000 folder is a shared folder that is available via the networked folders function on the customer's PC.

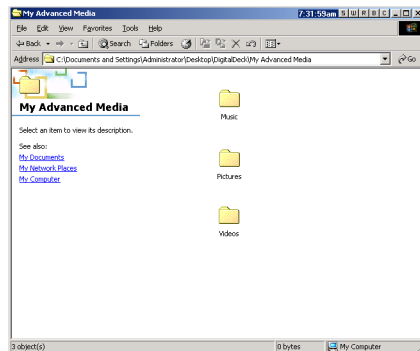
- 1 Open the MX 1000 folder:
  - a Go to Networks on the customer's PC and find the MX 1000 folder icon.
  - b Double click on the MX 1000 folder icon. This will open the MX 1000 folder where you will see the My Advanced Media folder.



- 2 Create a shortcut of the My Advanced Media folder and place it on the PC desktop.

**NOTE** The My Advanced Media shortcut will be much easier for the end customer to find if it is placed on the PC desktop.

- 3 Double-click on the My Advanced Media folder. You will see the following folders:
  - Music
  - Pictures
  - Videos

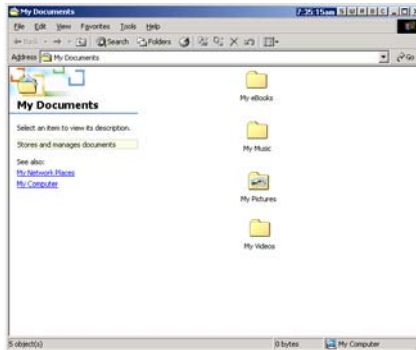


### Set Up Digital Media Files on PC

- Go to the digital media folders on the customer's PC (typically titled, for example, My Music, My Photos).

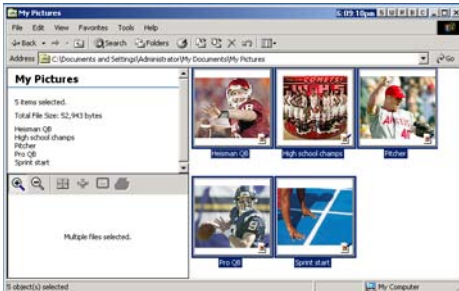
**NOTE** Work closely with the customer at this stage to ensure that you are finding the correct digital media files. The customer often sets up their digital media files to meet their personal preferences.

**NOTE** My Music and My Pictures are typically default folders on a PC. You may need to add a My Videos folder.



- Open the desired media folder and select the media files that the customer wants to be able to view on the DDen.

**NOTE** It is advised that you DO NOT select the entire media folder to be stored on the MX 1000. Doing this will force the customer to display multiple folders in the media guide to find the desired media file when using the DDen.



- Drag and drop the selected media files into the appropriate My Advanced Media folder.

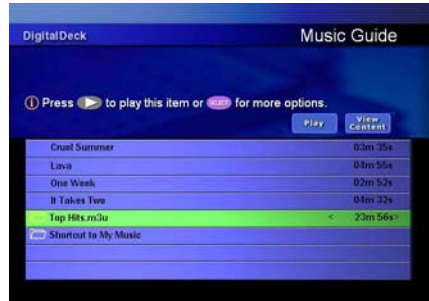
**NOTE** Drag and drop the music files to the Music folder, the photo files to the Pictures folder.

- Repeat **steps 1–6** until all the media files that the customer wants to play on the DDen have been stored on the MX 1000.



- 8 If the file system is set up correctly, you will see the titles of the media files from the My Advanced Media folders in the Music, Photo, and Video Guides.

**NOTE** Viewing this menu requires the television and eDeck to be turned on.



## Frequently Asked Questions

- Q: How many shows can I store on my DDen?
- A: Assuming 2 GB per hour of recording, your DDen can hold about one hundred hours worth of shows.
- NOTE** This may vary depending on how many music, photo, and video files have been stored on the MX 1000, which stores a total of 200 GB.
- Q: Why don't any of the listed IR codes seem to work?
- A: Check the following:
- The correct manufacturer has been selected for each device.
  - The IR emitter on the device you are trying to control has not fallen off or become disconnected from the back of the eDeck.
- Q: Do I need to have an Internet connection within my Ethernet network?
- A: Yes, since this is how your DDen receives all of its updated information and software updates.
- NOTE** Your DDen connects to DigitalDeck's server nightly.
- Q: Does DDen support wireless networking?
- A: No, present WiFi standards do not guarantee the quality of service DigitalDeck requires to allow for high-quality video streaming.
- Q: Which file formats does the DDen support?
- A: The DDen supports the following file formats:
- MPEG1
  - MPEG2
  - MP3
  - JPEG
- Q: If there is a power outage, will the DDen need to be reconfigured?
- A: No, both the MX 1000 and eDeck will reset themselves after a power outage with no loss of data or previous settings.

- Q: How long does it typically take to set up a two-room, three-room or four-room DDen?
- A: Assuming the Ethernet network is configured correctly, you can assume the following for setting up your DDen:
- approximately 5 minutes for the MX 1000
  - approximately 15 minutes per eDeck
  - approximately 15 minutes to set up your PC if you plan to distribute content you may already own
- Q: How can I configure the DDen to be able to watch video on demand and/or pay-per view shows?
- A: No special setup is required. You are able to watch those shows in the same way you watched them before installing the DDen.
- Q: Which video format does an eDeck output?
- A: An eDecks outputs video in 480i format.
- Q: Why am I unable to play some files (music, photos, or videos) that I have uploaded to the MX 1000 My Advanced Media folder?
- A: Check the files for the following:
- They are in the MPEG1, MPEG2, MP3, or JPEG file format.
  - They are in the appropriate folders (that is, video files in Video folder).
- Q: What computer operating systems is the DDen compatible with?
- A: Any and all networkable computers. Since the DDen is a stand-alone system, any computer (Linux, Macintosh, PC) can access the My Advanced Media folder over the network to save files onto the MX 1000.
- Q: I understand that the current DDen cannot record Hi Definition (HD) or 5.1 Surround Sound, but does the DDen allow pass-through for both of these while watching live television or a DVD?
- A: No, eDecks do not pass HD content. You can watch HD content locally and still distribute that same content via your DDen in Standard Definition (SD). To enable this you need to connect your source device to both the television/HiFi and to the eDeck using both the device's HD and SD connectors.

## Customer Support

DigitalDeck customer support includes the latest versions of our technical documentation, email and live customer support.

### Documentation Updates:

For information regarding product support and software updates please visit DigitalDeck's support pages.

**[www.digitaldeck.com/support](http://www.digitaldeck.com/support)**

### Email Support:

DigitalDeck email support ensures a response within 24 hours Monday-Friday. Send an email with a detailed description of the issue you are experiencing to:

**[support@digitaldeck.com](mailto:support@digitaldeck.com)**

### Phone Support:

You can contact a DigitalDeck technical expert Monday-Friday 9am–5pm PST (Some holidays excluded).

**(650) 413-6087**